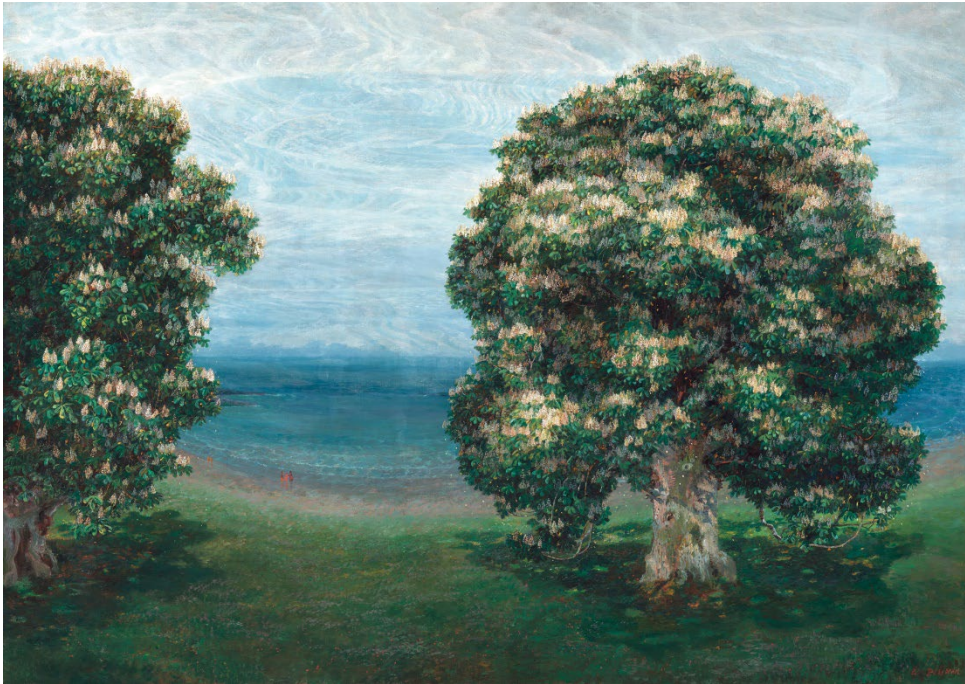


GROW
THE TREE IN ART

Lower Belvedere
23 September 2022 to 8 January 2022



Emilie Mediz-Pelikan, *Flowering Chestnut Trees*, 1900
Photo: Johannes Stoll / Belvedere, Vienna

GROW THE TREE IN ART

Lower Belvedere

23 September 2022 to 8 January 2022

The Tree of Knowledge, the Tree of Enlightenment, the Axis of the World: Following these narrative strands, the exhibition *GROW* is centered around the tree as a subject in art and its relationship to humankind. Trees accompany our lives – as sources of oxygen, shade-givers, anchors of calm. Culturally, the tree has always been symbolic – a mysterious bearer of knowledge, signifier of strength and power, or harbinger of ecological aberrations to come.

Director Stella Rollig: *“In the current climate crisis, the tree is perceived more than ever as a companion whose survival or demise has direct, tangible effects, not the least of which are emotional ones. While a tree dying on your own street is painful, the far-off deforestation of the rainforest is downright frightening. This exhibition explores this deep connection between humans and trees.”*

Throughout the centuries, the tree has been an area of projection for humankind’s relationship to nature and questions about human identity. The exhibition at the Lower Belvedere builds a thematic connection from the tree of knowledge between good and evil, to the tree of enlightenment, to the tree as metaphorical axis of the world; a thematic “branching” that expands from the spiritual to the rationally tangible to ecological proclamations to explain the significance of the tree in art. Whether as a cautionary reminder of eternal damnation, as in Giovanni Segantini’s *The Evil Mothers*, or as a peaceful observer of an intimate story, as in Emilie Mediz-Pelikan’s *Blossoming Chestnut Trees*, in each case, the tree in art represents the qualities we project onto it. Nilbar Güreş’s *Headstanding Totem* from 2014 is a contemporary version of a mythological figure that, in close connection with the tree, can also be read as an appeal to our concern for the environment.

Curator Miroslav Haľák: *"This approach to the tree as a subject has the potential to catch one off guard due to its emotional weight – over the centuries, people have assigned both humane and divine attributions to the tree. In its personified form, the tree acts as guardian, loner, social being, listener, protector, or climate savior."*

The show invites visitors to engage with spiritual ideas, inspirational form-finding, and philosophical concepts. Particularly in a time of forest fires and deforestation, it asks urgent questions about the perils of the climate crisis, and consciously relies on sustainable materials and strategies in its own realization. Beyond the lens of art history and art theory to reappraise the tree as an important motif, the exhibition also aims to contribute to discussions on humanity's relationship to our environment and on the conditions of our continued existence.

The selection of works is grounded in the Belvedere's collection and supplemented by a number of loans. The 102 works on display, including paintings, sculptures, and installations, span a period from the fifteenth century to the present. Two installations and a mural in the entrance area were made especially for this exhibition.

The structure of the exhibition is based on the thematic concepts of the Tree of Knowledge, the Tree of Enlightenment, and the Axis of the World and traces tree iconography throughout history. In these three sections, GROW shows different perspectives on the tree: as a symbol and mediator between the supernatural and the human, as an object of science and source of inspiration, and as an omen for upcoming ecological developments. Each section deals with concepts such as "transformation" in the sense of the supernatural, "mirroring" in terms of the tree as a projection surface, and "instrumentalization," for example, during the Nazi era. The Baroque architecture of the exhibition rooms is also integrated into the narrative – a plaster medallion by Santino Bussi in the marble hall of the Lower Belvedere, for example, or the role of trees in mythological imagery from the Baroque era.

A specially curated soundtrack immerses individual rooms in a specific sonic atmosphere: Nora Skuta has interpreted a sonata by John Cage, while compositions by Erik Truffaz, Arve

Henriksen, David Kollar, and others accompany visitors throughout the exhibition. Padhi Frieberger's black-and-white photographs designate the sound stations. The soundtrack can be accessed via audio guide or the museum app Smartify and can also be purchased as a CD in the museum shop.

***GROW* at the Green Belvedere:** The exhibition was planned with ecological sustainability in mind. In terms of implementation, it meant that plastic and such typical exhibition features as adhesive letterings were dispensed with. Wall text was painted with the help of paper stencils. The wall labels are made of seed paper, printed with bio-degradable ink. The length of transport routes for the artworks was also kept to a minimum. The sculpture by Giuseppe Penone made the longest journey, coming from Turin, with the other works coming from Austria and the nearby cities of Bratislava and Brno. The catalogue for *GROW* was produced on a carbon-neutral basis.

A supplementary program will be devoted to topics such as the tree in music, in religion, and in philosophy, its occurrence in outsider art, and general topics surrounding ecology. It will include several artist talks and an extensive film program at the Blicke Kino.

ARTISTS (76)

Eduard Ameseder
Ferdinand Andri
Joannis Avramidis
Robert Bielik
Klemens Brosch
Josef Čapek
Franz Anton Coufal
Lucas Cranach
Constantin Damianos
Gunter Damisch
Honoré Daumier
Christian Eisenberger
Daniel Fischer
Padhi Frieberger
Giovanni Giuliani
Franz Graf
Asta Gröting
Katharina Grosse
Nilbar Güres
Hannes Haslecker
Cary Hauser
Wolfgang Hollegha
Adolf Hölzel
Michal Kern
Anselm Kiefer

Vera Klimentyeva
Peter Kogler
Johann Korec
Johann Victor Krämer
Otakar Kubín
Max Kurzweil
Marek Kvetan
Maria Legat
Andries Cornelius Lens
Liza Lou
René Magritte
Ralo Mayer
Edda Mally
Karl Mediz
Emilie Mediz-Pelikan
László Mednyánszky
Meister der Crispinuslegende
Zuzana Mináčová
Alois Mosbacher
Hans Nagelmüller
Otakar Nejedlý
Donna Ong
Emil Orlik
Marek Ormandík
Giuseppe Penone

Rona Pondick

Florian Raditsch

Carl Rahl

Albert Reuss

Anton Romako

August Roth

Ernestine Rotter-Peters

Dorota Sadovská

Ludwig Ferdinand Schnorr von Carolsfeld

Martin Schnur

Giovanni Segantini

Joseph Selleny

Jakub Špaňhel

Lilly Steiner

Steirischer Maler

Petr Štembera

Curt Stenvert

Ernst Stöhr

Oswald Tschirtner

Jiří Valoch

Joseph von Führich

Elisabeth von Samsonow

Moritz von Schwind

Olga Wisinger-Florian

Adolf Wissel

Max Zaeper

Jimmy Zurek

CATALOGUE



GROW. Der Baum in der Kunst

Editors: Stella Rollig, Miroslav Haľák

Authors: Július Fújak, Ivan Gerát, Miroslav Haľák,
Angela Kallhoff, Isabel Kranz, Sophie Reyer, Stella
Rollig, Claudia Slanar

Graphic Design: Christian Schienerl, Nina Sponar, Joy
Xu, SCHIENERL D/AD, Vienna

Printing and binding: Gugler GmbH, Melk

Publisher: Buchhandlung Walther und Franz König

208 pages, ca. 160 illustrations

Format: 19 × 24 cm, Softcover, Swiss brochure

German Edition

ISBN (museum edition): 978-3-903327-31-3

Price: EUR 29,80

EXHIBITION SOUNDTRACK

Curators of the compilation: Miroslav Haľák, Ján Sudzina

Composers: Szymon Mika, Krzysztof Kobylński, Oskar Rózsa, Szaturma, Tommy Caggiani,
David Kollar, Soheil Peyghambri, Julo Fújak & Marián Varga, John Cage, David Kollar & Arve
Henriksen, Waking Vision, Pavel Jakub Ryba

Mastering: Tomáš Mutina

Executive producer: Ján Sudzina

Photos: Padhi Frieberger / Belvedere, Wien 2022

Graphic Design: SCHIENERL D/AD, Wien

© & ® HEVHETIA 2022, HV 0247-2-331, SOZA/BIEM. All rights reserved. Unauthorized copying, hiring, lending, public performance and broadcasting of this recording prohibited.

Scan QR-Code and listen to the GROW Soundtrack:



EXHIBITION AND FILM PROGRAM

Please find updated information about our on-site program on our website:

<https://www.belvedere.at/en/on-request-groups>

Subject to the current valid regulations!

GENERAL INFORMATION

Exhibition Title	GROW. The Tree in Art
Exhibition Duration	23 September 2022 to 8 January 2023
Exhibition Location	Lower Belvedere
Exhibits	102 works (paintings, installations, sculptures, photographs)
Artists	76
Curator	Miroslav Haľák
Exhibition Management	Tanja Angermann-Cekinmez
Contact	Belvedere, Prinz Eugen-Straße 27, 1030 Vienna T +43 1 795 57-0 www.belvedere.at
Art Mediation	Belvedere Art Mediation T + 43 1 795 57-134 M public@belvedere.at
Press Contact	Press Belvedere, Prinz Eugen-Straße 27, 1030 Vienna T +43 1 795 57-177 M press@belvedere.at

The current opening hours and ticket prices can be found on the website at www.belvedere.at

Further information and exhibition press photos are available to download at belvedere.at/en/press.

#GROW